



57 Silo Drive

Farncombe GU7 3NX

Guide Price: £539,500 Freehold





- Easy Reach of Village Centre & Station
- Entrance Hall & Cloakroom
- Sitting Room
- Dining Room
- Fitted Kitchen
- Integral Store/Work Room
- Three Bedrooms & Shower Room
- South Westerly Facing Garden
- Small Garage/Store
- Large Driveway



An extended and much improved three bedroom detached family house with attractive south westerly facing garden, providing bright and well planned accommodation that includes a cloakroom, large sitting room, dining room and a stylish fitted kitchen. Other benefits include a useful work room and small garage/store created from the original garage, double glazing and gas central heating together with a large driveway. The property occupies a great location being within easy reach of Farncombe village centre with its excellent shops, leisure & recreational facilities, popular schools, bus routes and only 1/2 a mile from the main line station.



















Main Line Station – 0.5 miles (Waterloo approx. 45/50 mins)

Village Centre – 0.6 miles Godalming – 1.4 miles

Infant School – 0.5 miles Primary School – 0.8 miles

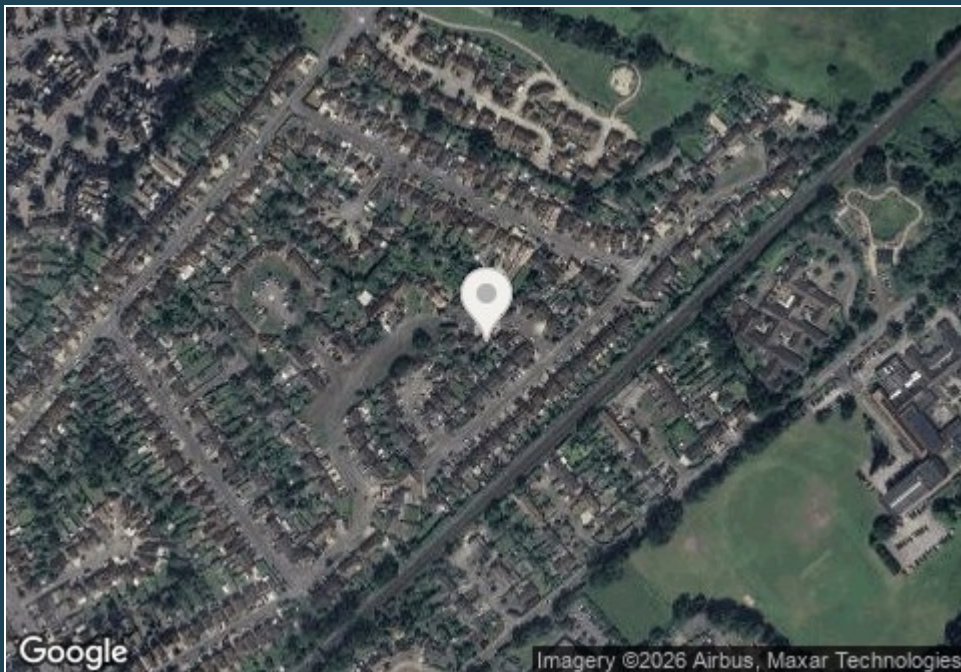
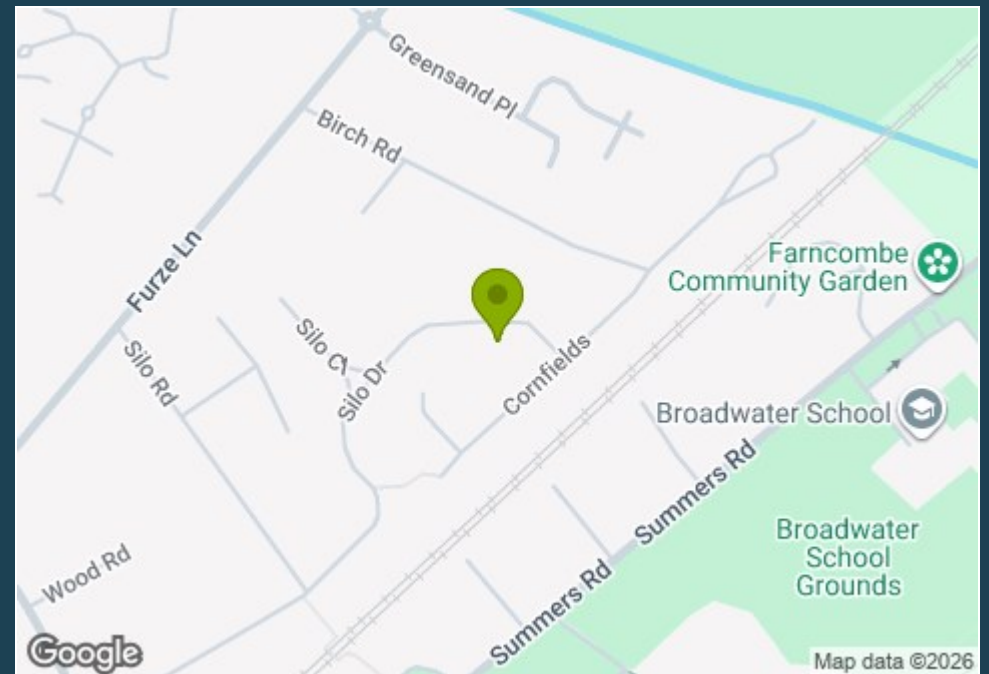
Secondary School – 0.6 miles

Doctors – 1 mile Dentist – 0.9 miles

A3 – 2.7 miles M25 – 12 miles M3 – 13 miles

Council Tax Band – D Payable – £2519.93p (2025/26)

EPC Rating – C



Directions: From Godalming High Street proceed down Bridge Street and across the mini roundabout into Bridge Road. At the next roundabout take the second exit right on to Meadrow (A3100). Continue along Meadrow and take the third turning on your left hand side into Hare Lane. Continue along Hare Lane which leads into St Johns Street and at the end of the T junction turn right into Station Road. Continue along Station Road bearing round to the left and over the level crossing and then take the first turning on your right hand side into Orchardfield Road. Continue to the end of Orchardfield Road and continue straight across into Silo Drive. Follow the road round and Number 57 will be found on your right.



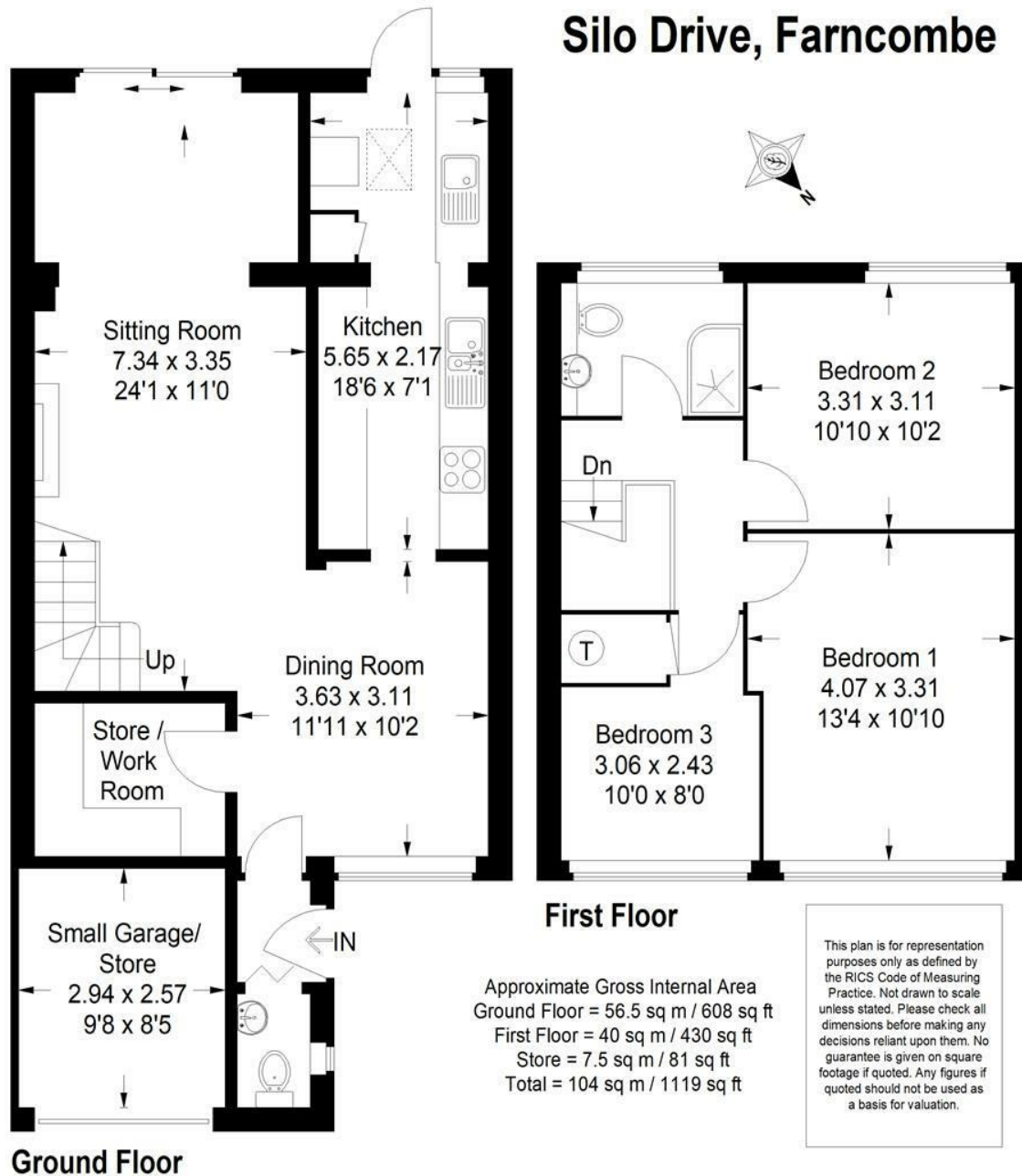


**Emery &  
Orchard**  
ESTATE AGENTS

01483 419 300

20 High Street  
Godalming  
Surrey  
GU7 1EB

email:office@emery-orchard.co.uk



Note: These details are intended as a guide only and whilst believed to be correct are not guaranteed and they do not form part of any contract. We would inform prospective purchasers that we have not tested any equipment, appliances, fixtures, fittings or services. Any items not referred to in these particulars are excluded from the sale unless separately agreed. The distance to services & schools are approximate and given as a guide only. Prospective purchasers must check the admission policy for any school mentioned as these may vary.